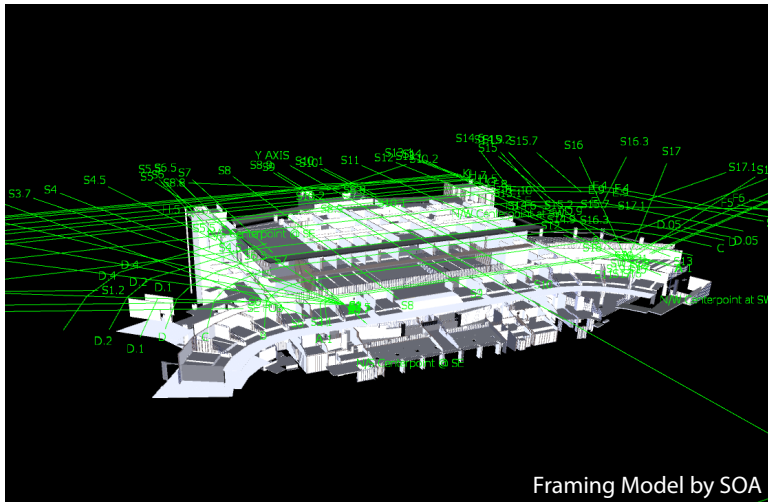


MU South End Zone Cold Formed Metal Framing Modeling



Framing Model by SOA

This project represents a less-common architectural service that SOA offers to general and sub-contractors: computer modeling for use in whole project construction coordination and clash detection.

The University of Missouri's South End Zone renovation, designed by Populous, was bound to a tight design and construction timeline. Large portions of the drawings utilized "delegated design," which necessitated that many subcontractors complete portions of the design. Moreover, all subcontractors were required to model their work and upload it to a Navisworks coordination model in order to avoid construction conflicts in the field.

As a result, TJ Wies, the cold formed metal framing subcontractor, selected SOA to model all of the framing and sheathing of interior and exterior walls. Because the structural metal framing design was "delegated," SOA modeled the designs as prepared by local structural engineering firm SSE.

As an architecture firm, SOA uses 3D modeling software daily for highly detailed design and construction documents, so transferring these skills to "shop drawing" level framing modeling was an easy transition. In addition, our expertise in coordinating various construction trades enabled us to perform our own clash detection, anticipating and addressing potential conflicts early on in the coordination process.

In a digital design environment, with ever shortening timelines, the preparation of detailed coordination models may be best suited to an architect's skills. SOA looks forward to being involved similarly on future construction projects.



LOCATION

Columbia, Missouri

DESCRIPTION

Framing Modeling for Addition and Renovation to South End Zone of University of Missouri Memorial Stadium

COMPLETION DATE

Currently under construction

CONSTRUCTION COST

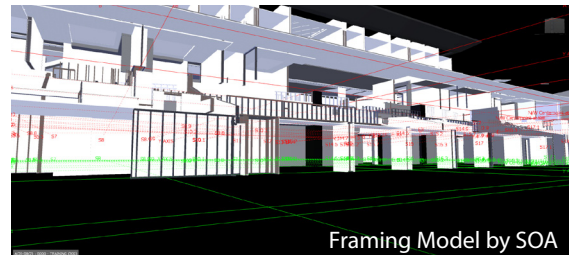
\$98 million total project cost

CLIENT REFERENCE

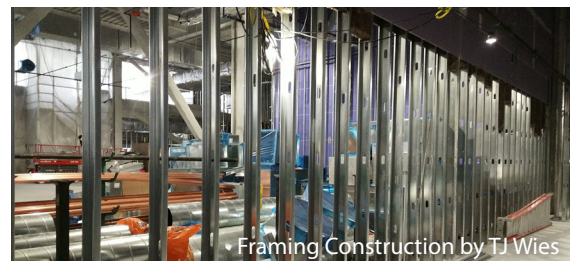
Ben Jasper, TJ Wies
573-556-8555



Rendering by Populous



Framing Model by SOA



Framing Construction by TJ Wies

"SOA was a fantastic design-assist/BIM modeling partner...TJ Wies has partnered with several other design-assist firms in the past and none of the partnerships were executed as smoothly and flawlessly as with SOA."

- Cameron Wies, BIM Manager TJ Wies Contracting, Inc.